



## **JEEP JK REAR BUMPER BRACKETS**

**FOR USE WITH VEHICLES EQUIPPED WITH 1 1/4" BODY LIFT**

Thank you for choosing Rough Country for your suspension needs.

This kit is for use with vehicles equipped with a 1 1/4" body lift to return the rear bumper to the stock location.

In addition to these instructions, professional knowledge of disassemble/reassembly procedures as well as post installation checks must be known. Attempts to install this system without this knowledge and expertise may jeopardize the integrity and/or operating safety of the vehicle. Please read all the instructions before beginning the installation. Check the kit hardware against the kit contents. Be sure you have all the needed parts and understand where they go. Also please review the tools needed list and make sure you have needed tools. If you have any questions please call us at 800-222-7023.

### **KIT CONTENTS:**

- 2-Inner brackets**
- 1-Driver side bracket**
- 1-Pass side bracket**

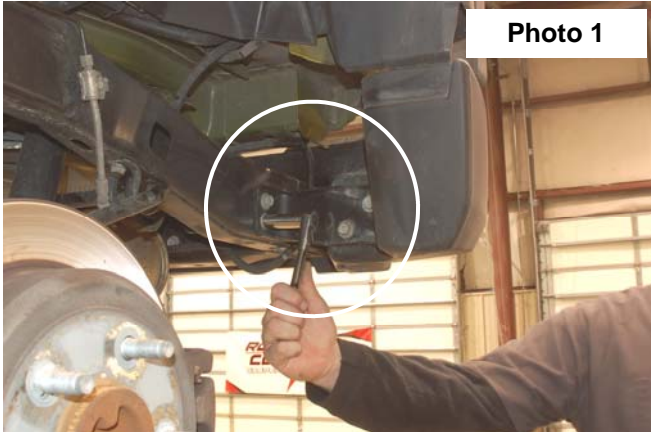
### **TOOLS NEEDED:**

- 16mm Socket**

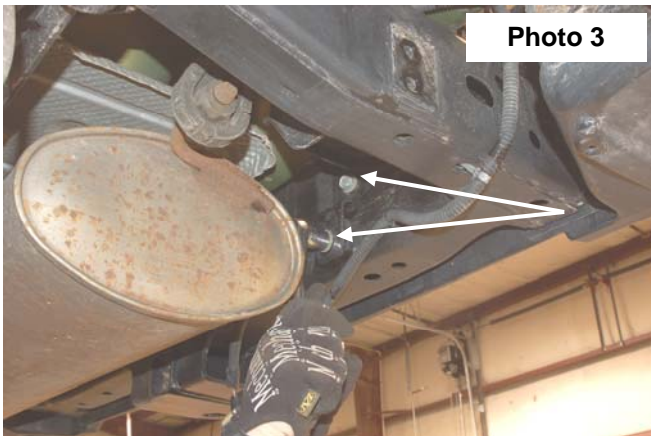


## INSTALLATION INSTRUCTIONS

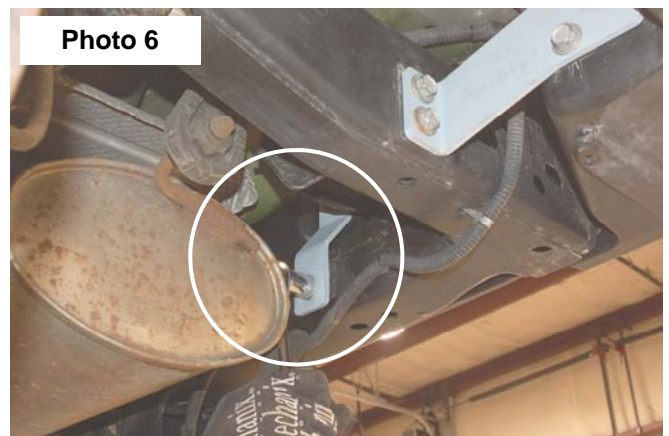
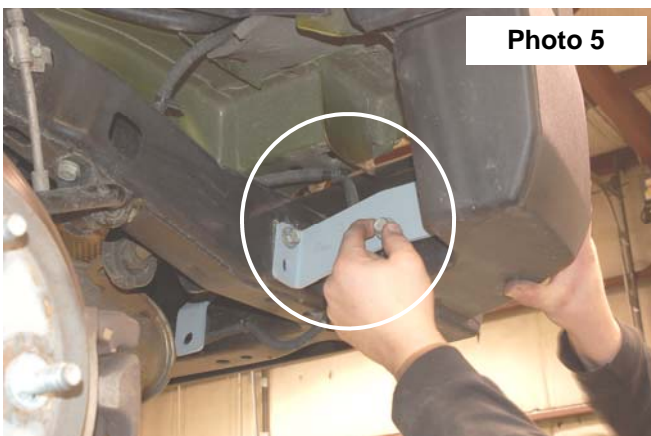
1. Remove the stock bumper brackets from the frame rail and the bumper as shown in **Photo 1 & 2** using a 16mm socket.



2. Remove the inner brackets from the frame rail as shown in **Photo 3** from the driver and passenger side. Retain the hardware for reuse.
3. Remove the stock bumper from the vehicle.
4. Install the inner bumper brackets on the bumper as shown in **Photo 4** using stock hardware. Do not tighten at this time.



5. Install the bumper on the frame and install the outer bumper brackets with the stock hardware. Do not tighten at this time. **See Photo 5.**
6. Align the bumper and tighten all hardware with a 16mm socket. **See Photo 6.**



## POST INSTALLATION

- All components must be retightened after 500 miles, and every three thousand miles after installation.

Thank You for using Rough Country for your off road vehicle needs

**ROUGH  
COUNTRY**  
SUSPENSION SYSTEMS