



GM 2007-18 1500 / 2500 / 3500 XL2 Step

Thank you for choosing Rough Country for all your vehicle needs.

Please read instructions before beginning installation. Check the kit hardware against the kit contents shown below. Be sure you have all needed parts and know where they go.

If question exist, please call us @1-800-222-7023. We will be happy to answer any questions concerning this product. Check all fasteners for proper torque. Check to ensure for adequate clearance between all components. Periodically check all hardware for tightness.

KIT CONTENTS:

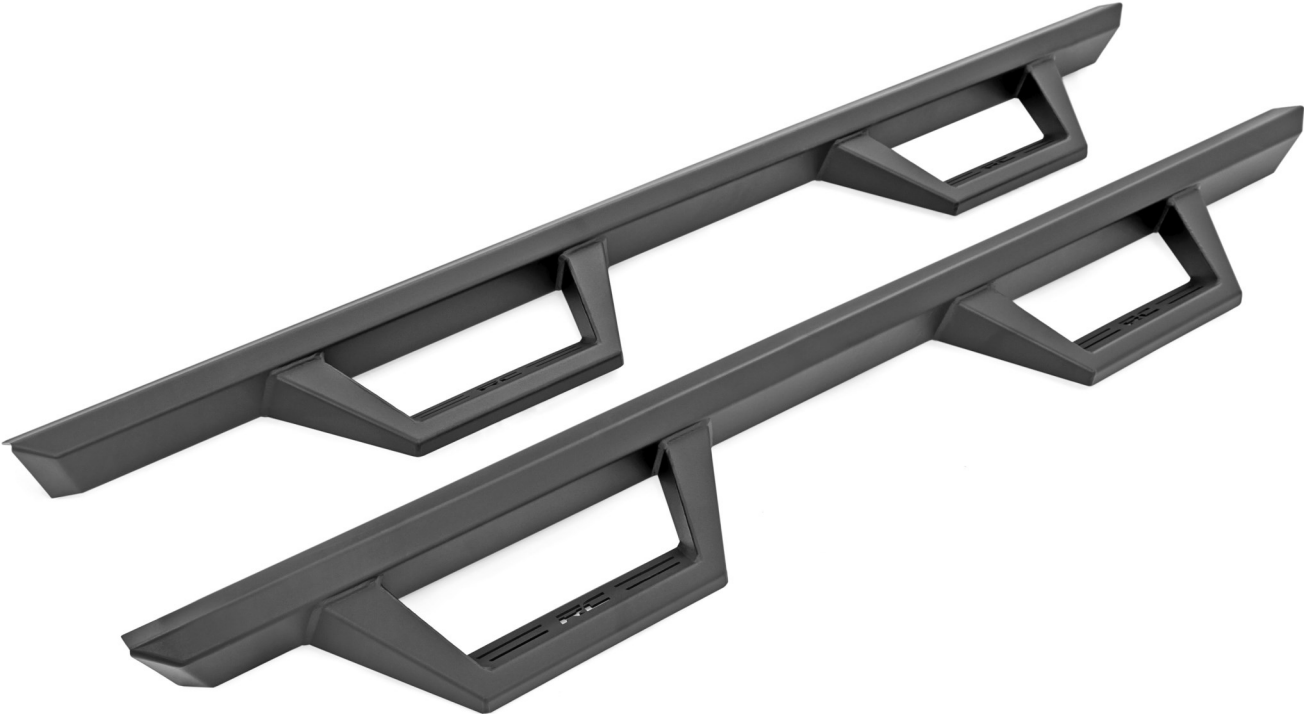
- Driver Side Step x1
- Pass Side Step x1
- Driver Side Brackets x3
- Passenger Side Brackets x3
- Pass Upper Front Bracket (Diesel) x1
- Pass Lower Front Bracket (Diesel) x1

TOOLS NEEDED:

- 13mm Wrench and Socket
- 17mm Socket
- Ratchet

HARDWARE INCLUDED:

- Nut Plates x6
- 8mm Hex Head Bolts x24
- 8mm Lock Washers x24
- 8mm Flat Washers x24
- 10mm Hex Head Bolt x1
- 10mm Flat Washer x1



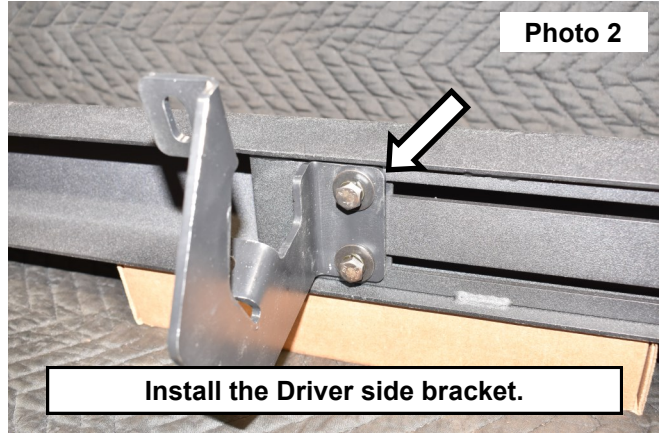
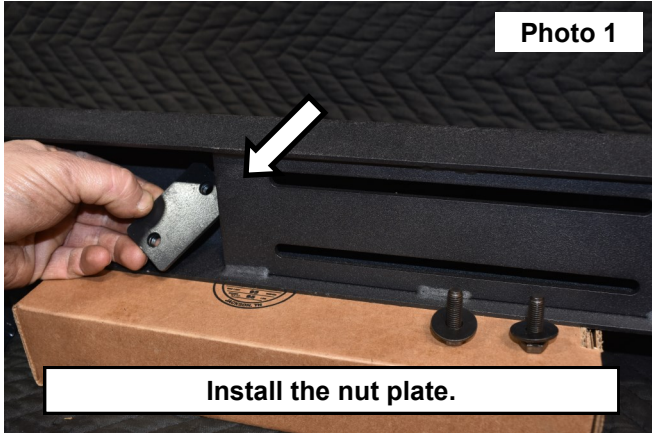
Torque Specs:

Size	Grade 5	Grade 8	Size	Class 8.8	Class 10.9
5/16"	15 ft/lbs	20ft/lbs	6MM	5ft/lbs	9ft/lbs
3/8"	30 ft/lbs	35ft/lbs	8MM	18ft/lbs	23ft/lbs
7/16"	45 ft/lbs	60ft/lbs	10MM	32ft/lbs	45ft/lbs
1/2"	65 ft/lbs	90ft/lbs	12MM	55ft/lbs	75ft/lbs
9/16"	95 ft/lbs	130ft/lbs	14MM	85ft/lbs	120ft/lbs
5/8"	135ft/lbs	175ft/lbs	16MM	130ft/lbs	165ft/lbs
3/4"	185ft/lbs	280ft/lbs	18MM	170ft/lbs	240ft/lbs



INSTALLATION INSTRUCTIONS

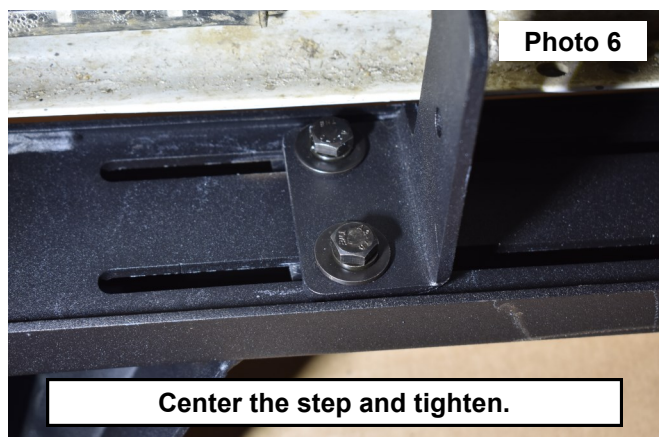
1. Locate the nut plate and install into the step. **See Photo 1.**
2. Locate the (3) Driver (Left) side step brackets and install using (2) 8mm-1.25 x 35mm Hex Head Bolts, (2) 8mm Lock Washers and (2) 8mm Flat Washers, to secure the step bracket to the step and the nut plate. **See Photo 2.**



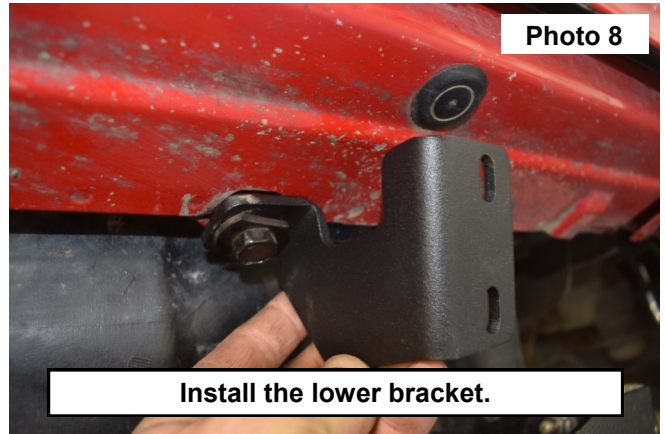
3. **Diesel models see Step 7.** Install the (3) passenger step brackets onto the step, using (1) nut plate, (2) 8mm-1.25 x 35mm Hex Head Bolts, (2) 8mm Lock Washers and (2) 8mm Flat Washers to secure the step brackets to the step and the nut plates. **See Photo 3.**
4. Install the step onto the vehicle. **See Photo 4.**



5. Secure the step brackets to the body of the vehicle using (2) of the supplied 8mm-1.25 x 35mm Hex Head Bolts, (2) 8mm Lock Washers and (2) 8mm Flat Washers, tighten using a 13mm wrench. **See Photo 5.**
6. Center the step to the desired location on the vehicle. Then tighten using a 13mm socket. **See Photo 6.**



7. For **Diesel** trucks Install the passenger side upper front bracket in-between the DEF tank and the body of the vehicle. Place the tab into the body to secure the bracket. **See Photo 7.**
8. Install the lower bracket to the pinch weld to the upper bracket and secure using (1) of the supplied 10mm-1.5 x 25mm Hex Head Bolt, (1) 10mm Flat Washers into the weld nut in the upper bracket. Tighten using a 17mm socket. **See Photo 8.**



9. Refer back to steps 3-6 to Install the center and rear step brackets and installation of the passengers side step.
10. Check that all hardware is tight after 500 miles.



By purchasing any item sold by Rough Country, LLC, the buyer expressly warrants that he/she is in compliance with all applicable, State, and Local laws and regulations regarding the purchase, ownership, and use of the item. It shall be the buyers responsibility to comply with all Federal, State and Local laws governing the sales of any items listed, illustrated or sold. The buyer expressly agrees to indemnify and hold harmless Rough Country, LLC for all claims resulting directly or indirectly from the purchase, ownership, or use of the items.

