



### CAN-AM 2016-21 Defender 3" Preload Kit

Thank you for choosing Rough Country for all your vehicle needs.

Please read instructions before beginning installation. Check the kit hardware against the kit contents shown below. Be sure you have all needed parts and know where they go.

If question exist, please call us @1-800-222-7023. We will be happy to answer any questions concerning this product.

Check all fasteners for proper torque. Check to ensure for adequate clearance between all components.

Periodically check all hardware for tightness.

#### KIT CONTENTS:

Small Preload Spacer x2 (Not supplied in Lone Star, Limited, or X MR kits)

Large Preload Spacer x2 (x4 in Lone Star, Limited, or X MR kits)

#### TOOLS NEEDED:

- 19mm Socket
- 15mm Wrench and Socket
- Ratchet
- Jack
- Jack Stands
- Torque Wrench



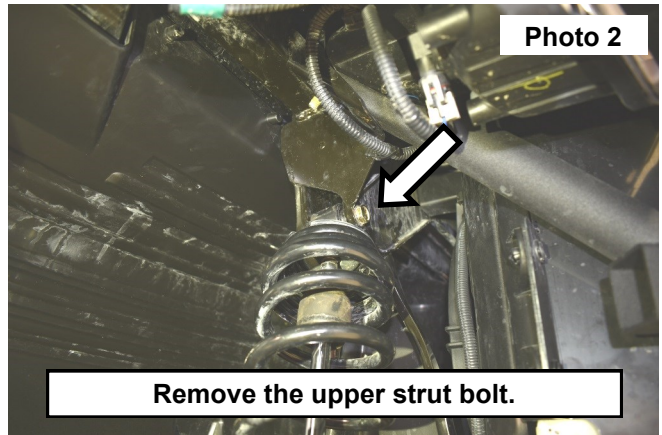
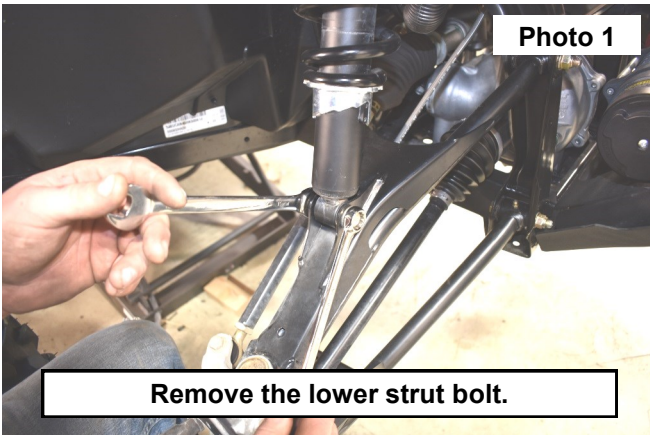
#### Torque Specs:

Size	Grade 5	Grade 8	Size	Class 8.8	Class 10.9
5/16"	15 ft/lbs	20ft/lbs	6MM	5ft/lbs	9ft/lbs
3/8"	30 ft/lbs	35ft/lbs	8MM	18ft/lbs	23ft/lbs
7/16"	45 ft/lbs	60ft/lbs	10MM	32ft/lbs	45ft/lbs
1/2"	65 ft/lbs	90ft/lbs	12MM	55ft/lbs	75ft/lbs
9/16"	95 ft/lbs	130ft/lbs	14MM	85ft/lbs	120ft/lbs
5/8"	135ft/lbs	175ft/lbs	16MM	130ft/lbs	165ft/lbs
3/4"	185ft/lbs	280ft/lbs	18MM	170ft/lbs	240ft/lbs

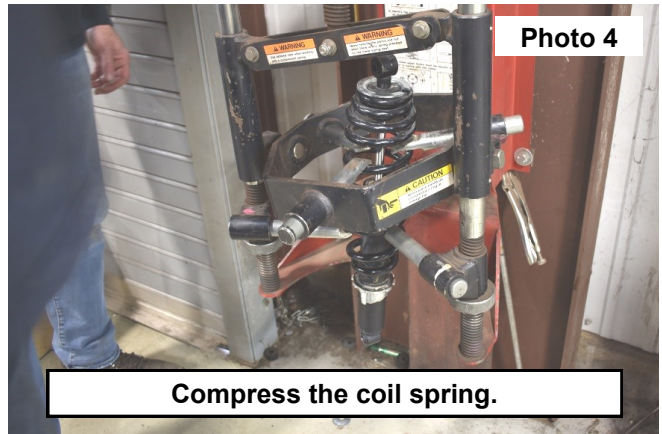
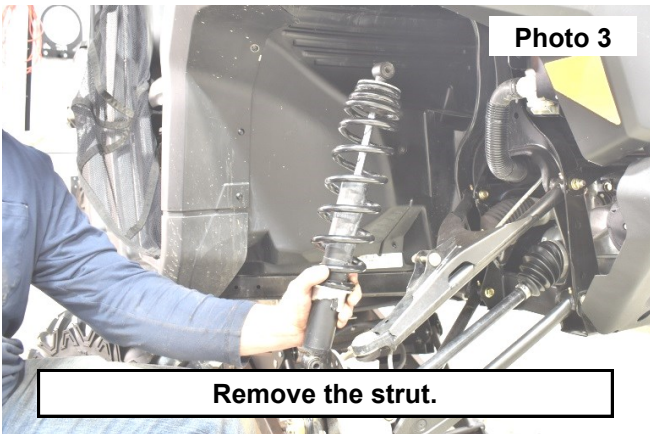


## INSTALLATION INSTRUCTONS

1. Place the utv on a flat clean surface and chock the rear wheels, using a jack raise up the front and place the jack stands under the frame and lower onto them.
2. Remove the front wheels and tires using a 19mm socket.
3. Support the lower control arm, then remove the lower strut bolt using 15mm wrench and socket. Retain hardware for reuse. **See Photo 1.**
4. Remove the upper strut bolt using a 15mm wrench and socket. Retain hardware for reuse. **See Photo 2.**
5. Remove the strut and install in a spring compressor or prepare to remove the spring. **See Photos 3 and 4.**

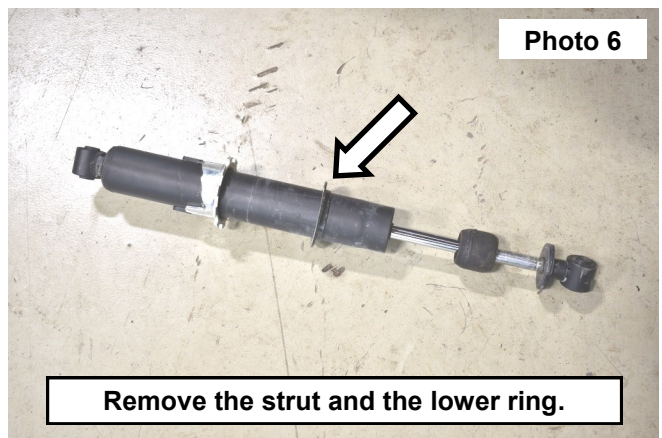
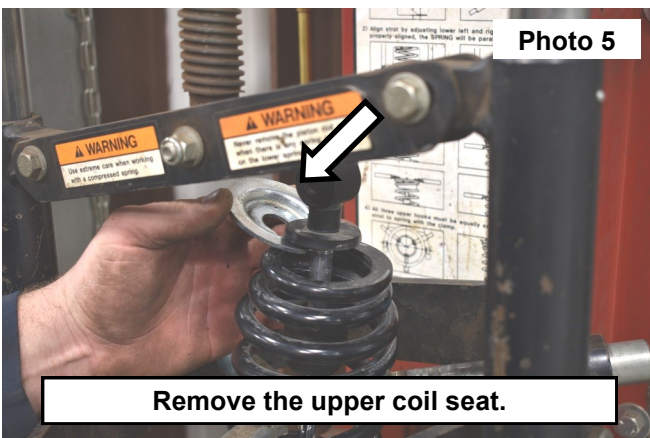


6. Compress the spring. Then remove the spring seat from the upper eye of the strut. Retain the spring seat for reuse.



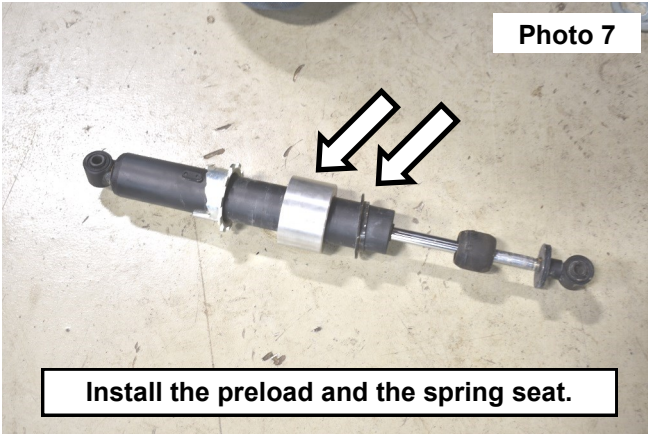
**See Photo 5.**

7. Remove the strut from the coil. Then remove and retain the lower spring seat from the strut. **See Photo 6.**
8. Install the preload spacer onto the strut and the retained lower spring seat on top of the preload spacer. **See Photo 7.**

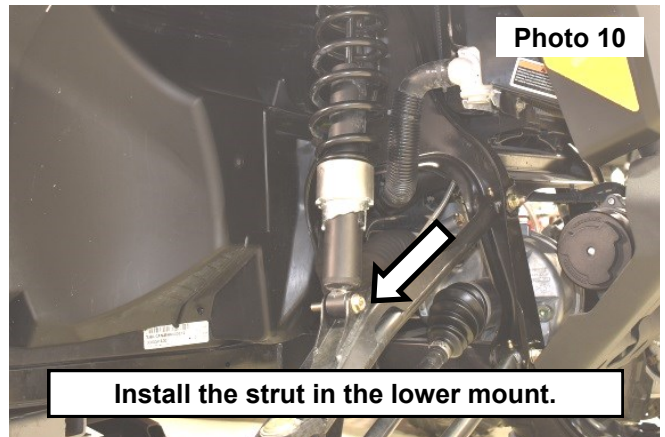
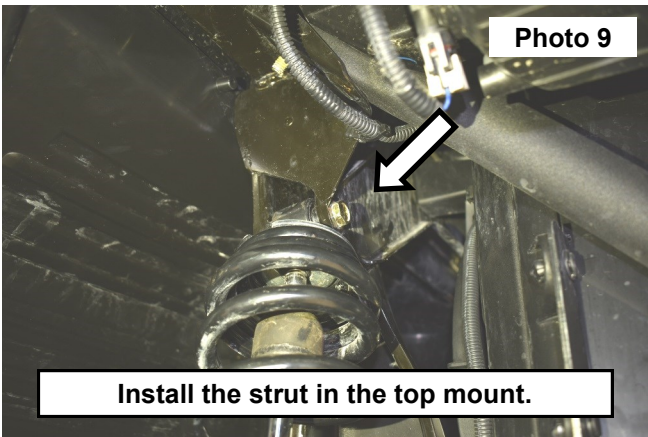




9. Install the strut into the compressed spring. Secure using the retained upper spring seat. **See Photo 8.**
10. Install the strut into the top mount using the retained hardware. Tighten using a 15mm wrench and socket. **See Photo 9.**



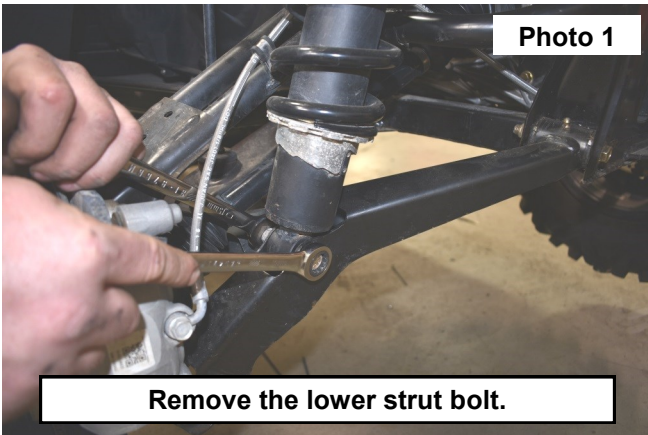
11. Install the strut into the lower mount using the retained hardware. Tighten using a 15mm wrench and socket. **See Photo 10.**
12. Install the wheels and tires using a 19mm socket .
13. Using a jack lift the utv up and remove the jack stands, then lower onto the ground.



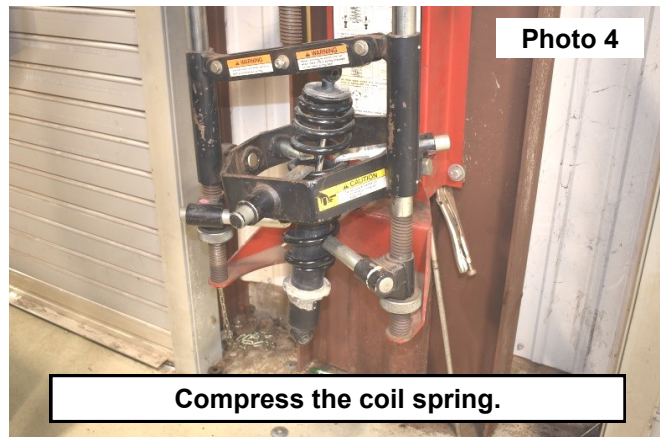
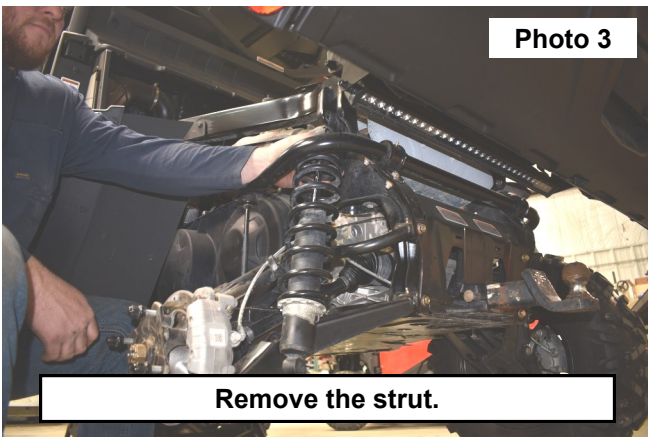


## REAR INSTALLATION INSTRUCTONS

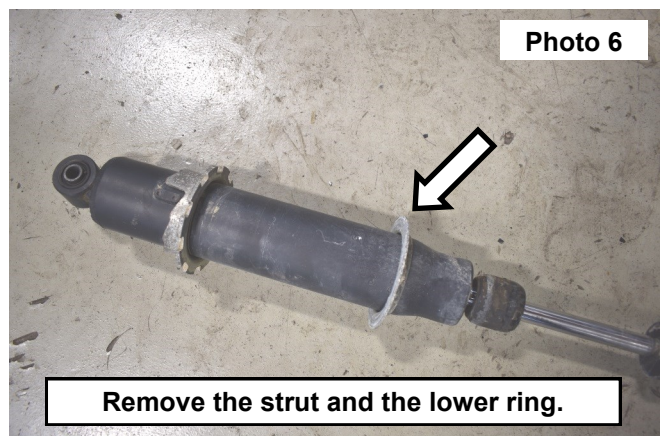
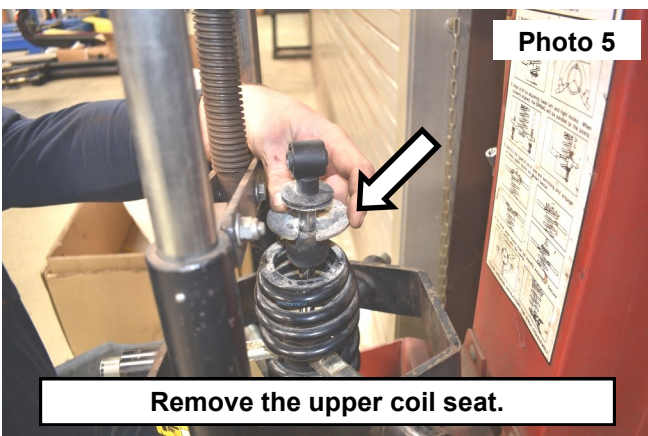
1. Place the utv on a flat clean surface and chock the front wheels, using a jack raise up the rear and place the jack stands under the frame and lower onto them.
2. Remove the rear wheels and tires using a 19mm socket.
3. Support the lower control arm, then remove the lower strut bolt using 15mm wrench and socket. Retain hardware for reuse. **See Photo 1.**
4. Remove the upper strut bolt using a 15mm wrench and socket. Retain hardware for reuse. **See Photo 2.**
5. Remove the strut and install in a spring compressor or prepare to remove the spring. **See Photos 3 and 4.**



6. Compress the spring. Then remove the spring seat from the upper eye of the strut. Retain the spring seat for reuse. **See Photo 5.**

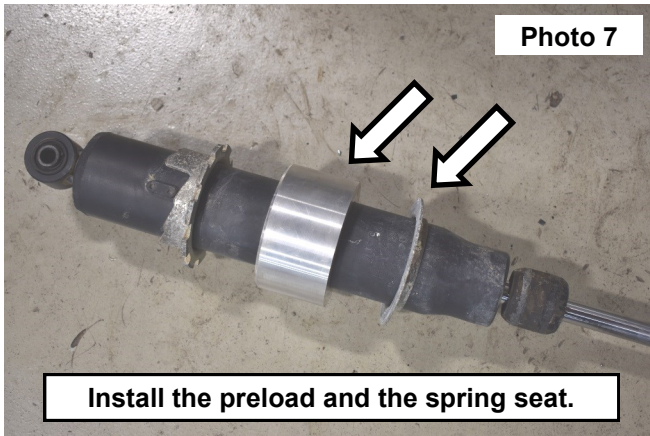


7. Remove the strut from the coil. Then remove and retain the lower spring seat from the strut. **See Photo 6.**
8. Install the preload spacer onto the strut and the retained lower spring seat on top of the preload spacer. **See Photo 7.**
9. Install the strut into the compressed spring. Secure using the retained upper spring seat. **See Photo 8.**

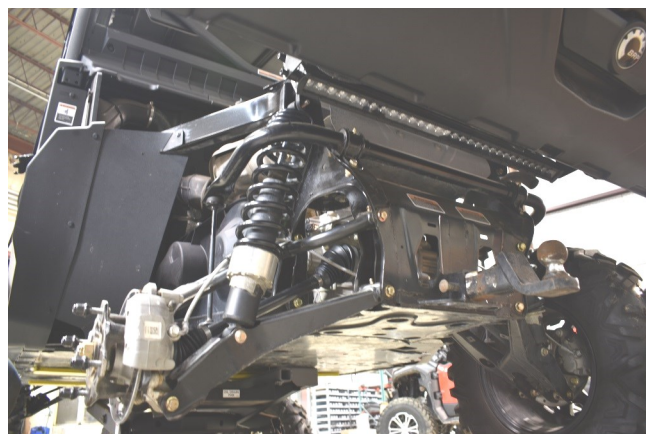
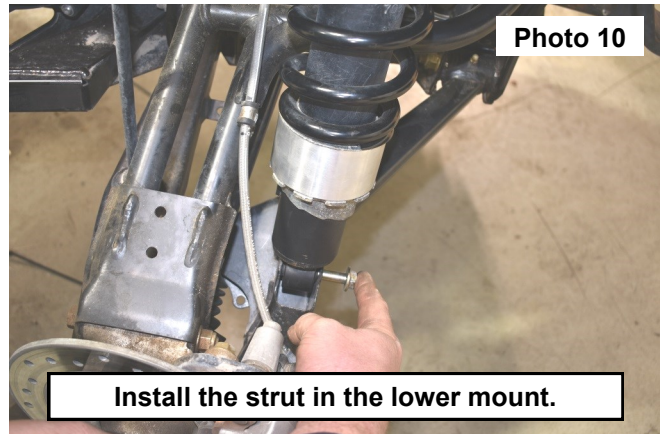
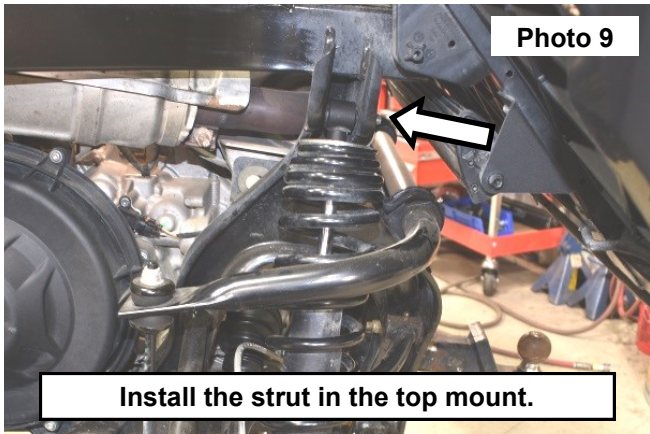




10. Install the strut into the top mount using the retained hardware. Tighten using a 15mm wrench and socket. **See Photo 9.**
11. Install the strut into the lower mount using the retained hardware. Tighten using a 15mm wrench and socket. **See**



- Photo 10.**
12. Install the wheels and tires using a 19mm socket .
  13. Using a jack lift the utv up and remove the jack stands, then lower onto the ground.



By purchasing any item sold by Rough Country, LLC, the buyer expressly warrants that he/she is in compliance with all applicable, State, and Local laws and regulations regarding the purchase, ownership, and use of the item. It shall be the buyers responsibility to comply with all Federal, State and Local laws governing the sales of any items listed, illustrated or sold. The buyer expressly agrees to indemnify and hold harmless Rough Country, LLC for all claims resulting directly or indirectly from the purchase, ownership, or use of the items.





